



Anker Innovations Limited. All rights reserved, registered in the United States and other countries.



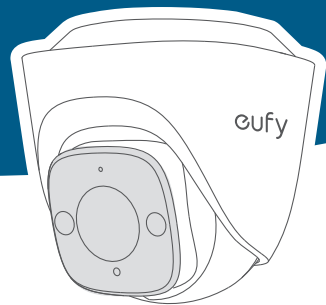
Model: T8P10
51005005499_V3



PoE Cam E41 Turret Cam Quick Start Guide



[Video/User Guide/Support](#)



Step 1. Get Items Ready

💡 Before mounting the camera, make sure your NVR is powered on and ready to connect to the camera.

For PoE Cam E41 Installation



PoE Cam E41



Positioning Sticker



Screw Pack



Mounting Bracket



18m Ethernet Cable



Waterproof Cover Pack

Tools/Devices You will Need



Phillips Screwdriver



Power Drill



Hammer

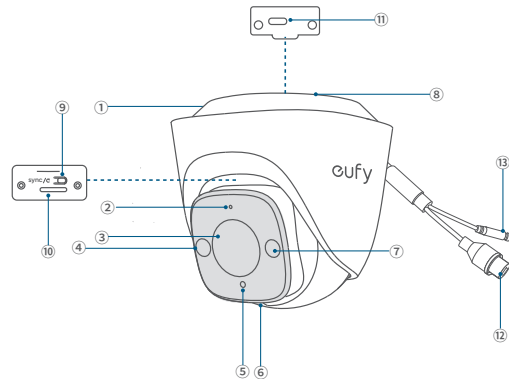


Ladder

3/4" (19 mm) & 16/64" (6 mm)

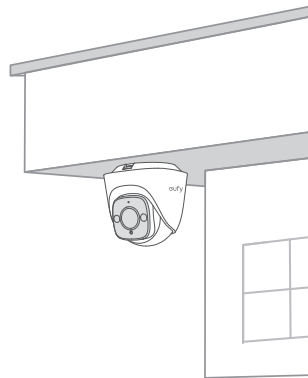
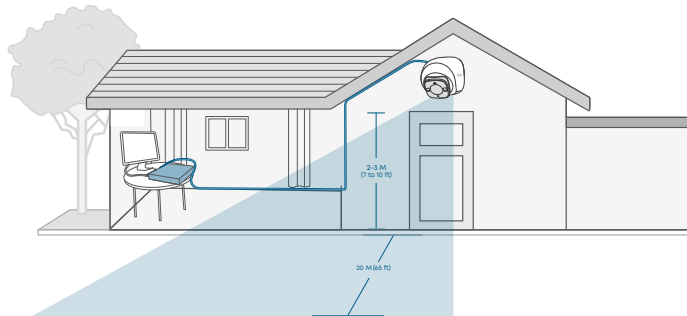
At a Glance

- ① Mounting Base
- ② Microphone
- ③ Camera Lens
- ④ Spotlight
- ⑤ LED Indicator
- ⑥ Speaker
- ⑦ Warning Light
- ⑧ Cable Notch
- ⑨ SYNC Button
- ⑩ SD Card Slot
- ⑪ Fusion Link Port
- ⑫ PoE Connector
- ⑬ DC Connector

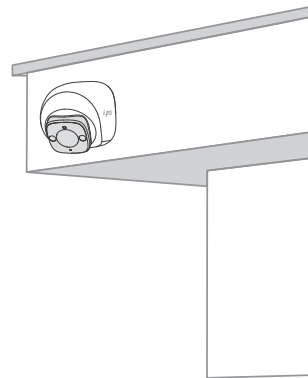


Step 2. Choose a Location

- Recommended Location:
- Height of 2 m to 3 m (7 ft to 10 ft)
- 20 m (65 ft) Field of View
- On the Ceiling or on a Wall

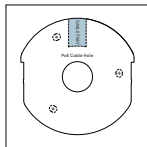
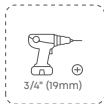


On the Ceiling

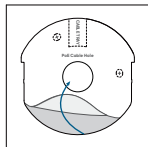


On the Wall

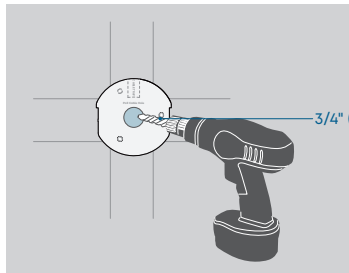
Step 3. Drill Cable Hole



① Determine Cable Direction

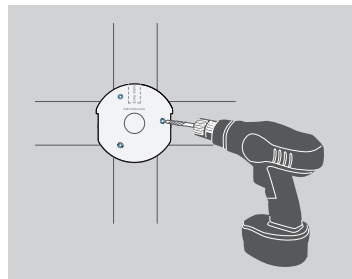
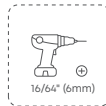


② Position

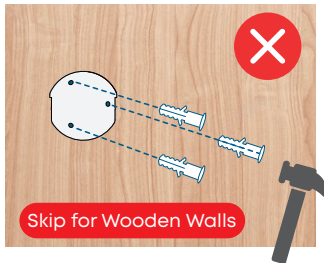
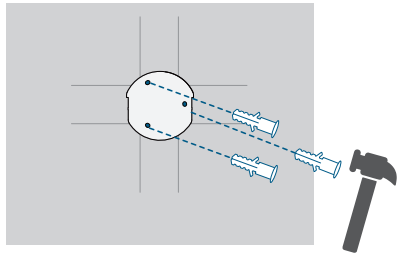
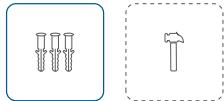


③ Drill Holes

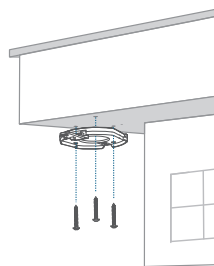
Step 4. Drill Screw Holes



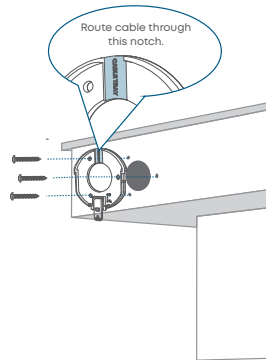
Step 5. Insert Anchors



Step 6. Install the Mounting Bracket



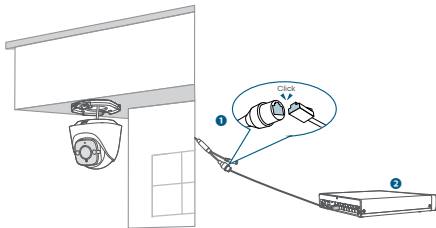
On the Ceiling



On the Wall

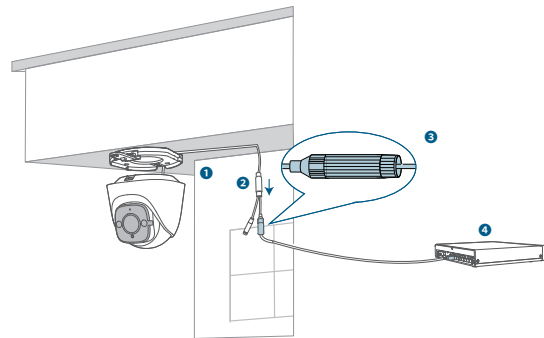
Step 7. Connect Camera to the NVR

- 1 Connect the camera with the Ethernet cable.
- 2 Ensure the Ethernet cable is connected to the NVR.



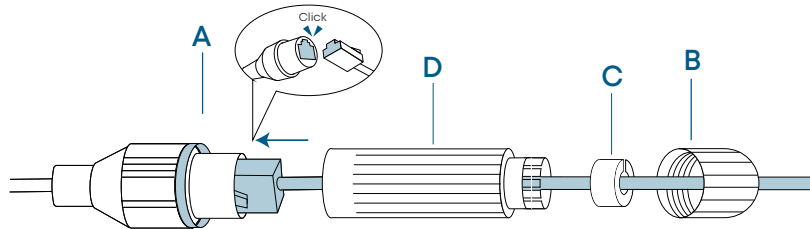
If the cable connector is exposed outside...

- 1 Route the cable through the cable notch.
- 2 Ensure the connector is positioned **downward** to prevent water intrusion.
- 3 Install the waterproof cover and connect the camera with the Ethernet cable ([next page](#)).
- 4 Ensure the Ethernet cable is connected to the NVR.



Waterproofing Cable Connectors

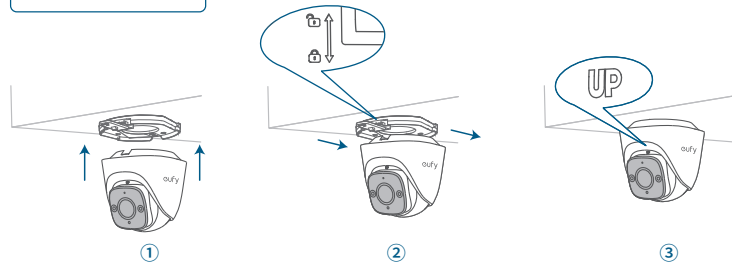
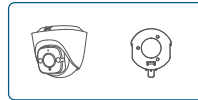
- 1 Ensure **A** is pre-installed on the PoE connector of the camera.
- 2 Route the Ethernet cable through these components in order: **B**, **C**, and **D**.
- 3 Plug the Ethernet cable into the camera PoE connector.
- 4 Attach **D** with the camera PoE connector, and twist to lock.
- 5 Insert **C** into **D**, and rotate **B** to secure it to **D**.



The shape of the waterproof cover and the connector may vary slightly.

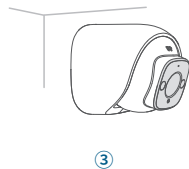
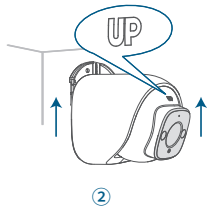
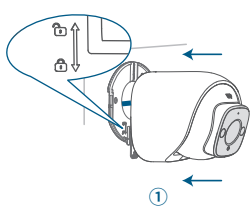
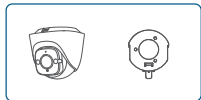
Step 8. Mount the Camera

Ceiling Mounting



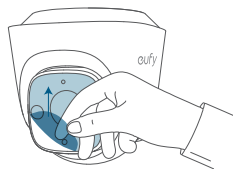
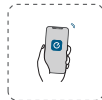
Ensure the camera is ALWAYS positioned upright with the 'UP' mark facing upward; otherwise, the live stream image will appear upside down.

Wall Mounting

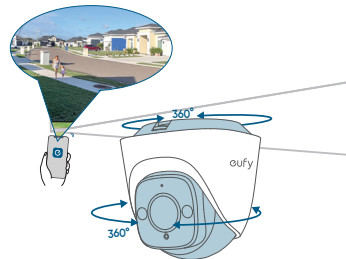


💡 Ensure the camera is ALWAYS positioned upright with the 'UP' mark facing upward; otherwise, the live stream image will appear upside down.

Step 9. Adjust the Camera Field of View



1 Remove the Protective Film



2 • Rotate the Camera to the Optimal Angle
• Check the Live Stream in the App

Important Safety Instructions

- The recommended temperature range for T8P10 and accessories is -30°C to 60°C (-22°F to 140°F).
- Unless specifically indicated that it is safe to do so in the user guide or instruction manual, do not use the devices in an environment that exceeds the recommended low or high temperature.
- Unless specifically indicated that it is safe to do so in the user guide or instruction manual, avoid exposing your devices to direct sunshine or excessively wet environments.
- Do not use the product in any way other than described herein in order to avoid personal injury or property damage.
- Users should comply with the laws and regulations of the corresponding countries and regions where the equipment is located (used), abide by professional ethics, pay attention to safety obligations, and strictly prohibit the use of our products or equipment for any illegal purposes. Our company will not be responsible for any violators' legal liability under any circumstances.

Notice

FCC Statement

This device complies with Part 15 of the FCC Rules. Operation is subject to the following two conditions: (1) this device may not cause harmful interference, and (2) this device must accept any interference received, including interference that may cause undesired operation.

Warning: Changes or modifications not expressly approved by the party responsible for compliance could void the user's authority to operate the equipment.

Note: This equipment has been tested and found to comply with the limits for a Class B digital device, pursuant to Part 15 of the FCC Rules. These limits are designed to provide reasonable protection against harmful interference in a residential installation.

This equipment generates uses and can radiate radio frequency energy and, if not installed and used in accordance with the instructions, may cause harmful interference to radio communications. However, there is no guarantee that interference will not occur in a particular installation. If this equipment does cause harmful interference to radio or television reception, which can be determined by turning the equipment off and on, the user is encouraged to try to correct the interference by one or more of the following measures: (1) Reorient or relocate the receiving antenna. (2) Increase the separation between the equipment and receiver. (3) Connect the equipment into an outlet on a circuit different from that to which the receiver is connected. (4) Consult the dealer or an experienced radio/TV technician for help.

The following importer is the responsible party:

Company Name: POWER MOBILE LIFE, LLC

Address: 10800 NE 8TH ST #900, BELLEVUE, WA, 98004, UNITED STATES

Telephone: 1-800-988-7973

IC Statement

This device complies with Industry Canada licence-exempt RSS standard(s). Operation is subject to the following two conditions:

(1) this device may not cause interference, and

(2) this device must accept any interference, including interference that may cause undesired operation of the device.

This Class B digital apparatus complies with Canadian ICES-003.

Customer Service



(US/Canada) +1 (800) 988 7973



support@eufy.com
service@myeufy.com.au (AU)

Anker Innovations Limited

Unit 56, 8th Floor, Tower 2, Admiralty Centre, 18 Harcourt Road, Hong Kong



@EufyOfficial



@EufyOfficial



@EufyOfficial